

Botanical touring with us in the Eastern Cape

Cameron and Rhoda McMaster



We have accompanied four Botanical tours in the Eastern Cape

**2005 A group led by Tony Avent of Plants Delight Nursery,
North Carolina , USA**

2006 A group led by Lauren & Scott Ogden of Texas, USA

**2007 Two tours – the first with Mark and Karen Wash, Trecanna Nursery,
Cornwall, UK.**

The second a tour led by Daan Smit of The Netherlands

**We covered all the major vegetation types in the East Cape from
Valley Thicket and Karoo/Namib vegetation to Alpine grassland
and Sub-Tropical coastal flora**

**The tours took place in late January and early February – the best
time for flowers in the Summer Rainfall Region**

2005 The Avent Party consisted of:

Tony Avent, Plants Delight Nursery, Raleigh, North Carolina
Carl Schoenfeld and Wade Roitsch, YuccaDo Nursery, Texas
Hans Hansen, Shady Oaks Nursery, Minnesota
Jim Dodson (a bestselling author) who wrote an account of the tour in his recently published book “Beautiful Madness”.



2006 Lauren's Party consisted of:

Lauren and Scott Ogden, Landscapers from Colorado/Texas
Dan Johnson, Curator Native Plants, Denver Botanic Gardens
Pat Kirwin, Landscaper from San Marcos, Texas
Laurel Voran and Jonathan Wright from Chanticleer Gardens,
Pennsylvania
Ellen Hornig of Seneca Hills Perennials, Oswego NY.

The Avent Group

Carl

Wade

Tony

Jim Hans



Lauren's Group

Lauren Scott Rhoda Ellen Jonathan Dan Michael Brown



Laurel

Patrick

THE 2007 PARTIES:

Mark and Karen Wash of the Trecanna Nursery,
Cornwall on a private mission to see *Eucomis*
and *Crocasmia*



The second tour:

Dan and Inge Smit, The Netherlands

Jan van Dijk, The Netherlands

Frank and Waltraud Herzfeld,
Germany

Chris Sanders, UK

Mike Watson and

Rick Shuttleworth, South Africa



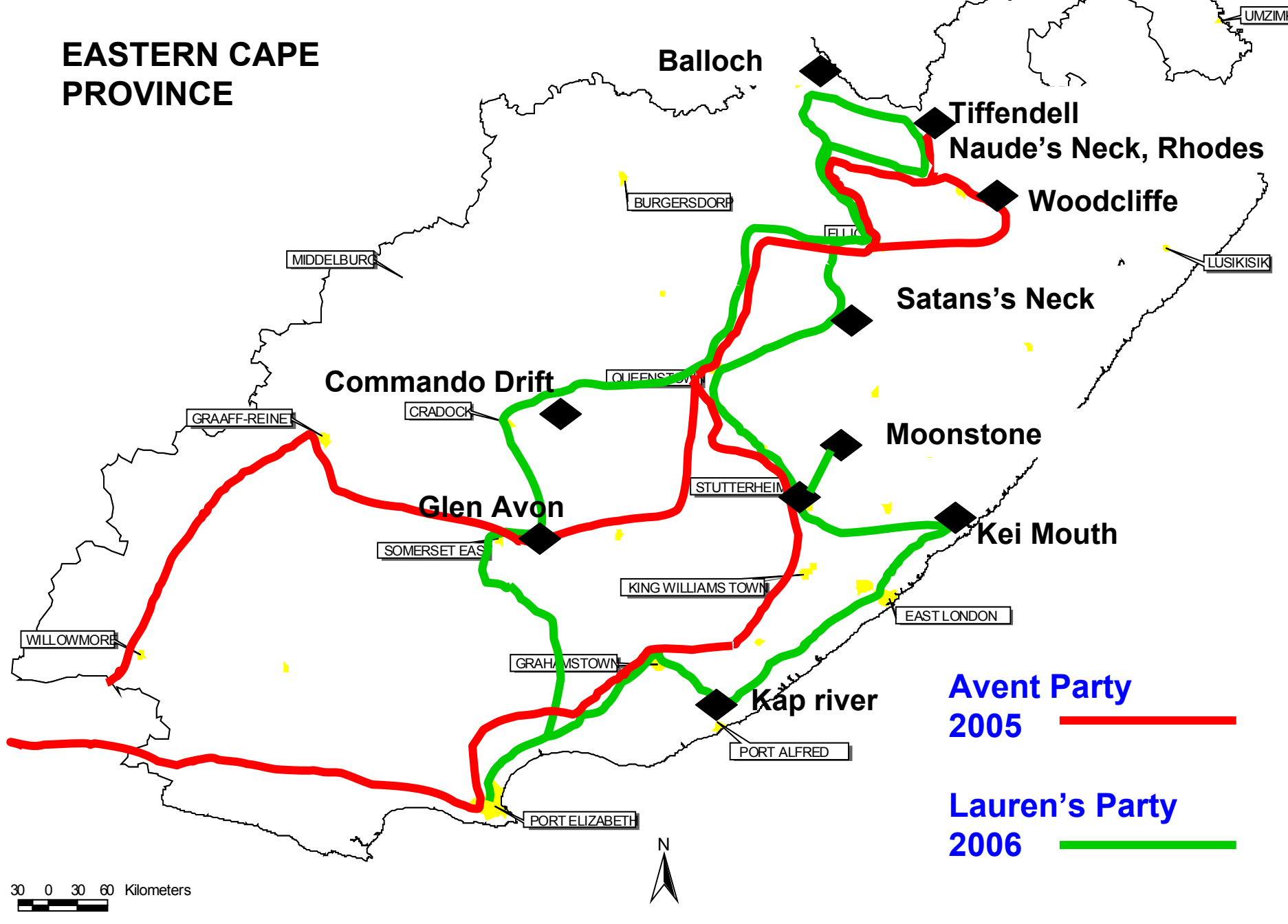


We visited many special destinations well off the usual tourist routes, staying on farms and in small villages so as to be in the heart of the countryside.

Each day the hikes or 4X4 excursions were to areas that are not easily accessible to ordinary tourists.

The farm accommodation was excellent, coming at a fraction of the price of the 4- and 5- star establishments used by tour operators, and so making the tour more affordable.

EASTERN CAPE PROVINCE



Let's go on a virtual tour of the Eastern Cape,

- Visiting the places where we stopped
- Looking at the plants and flowers we saw

Commando Drift Dam,
Cradock



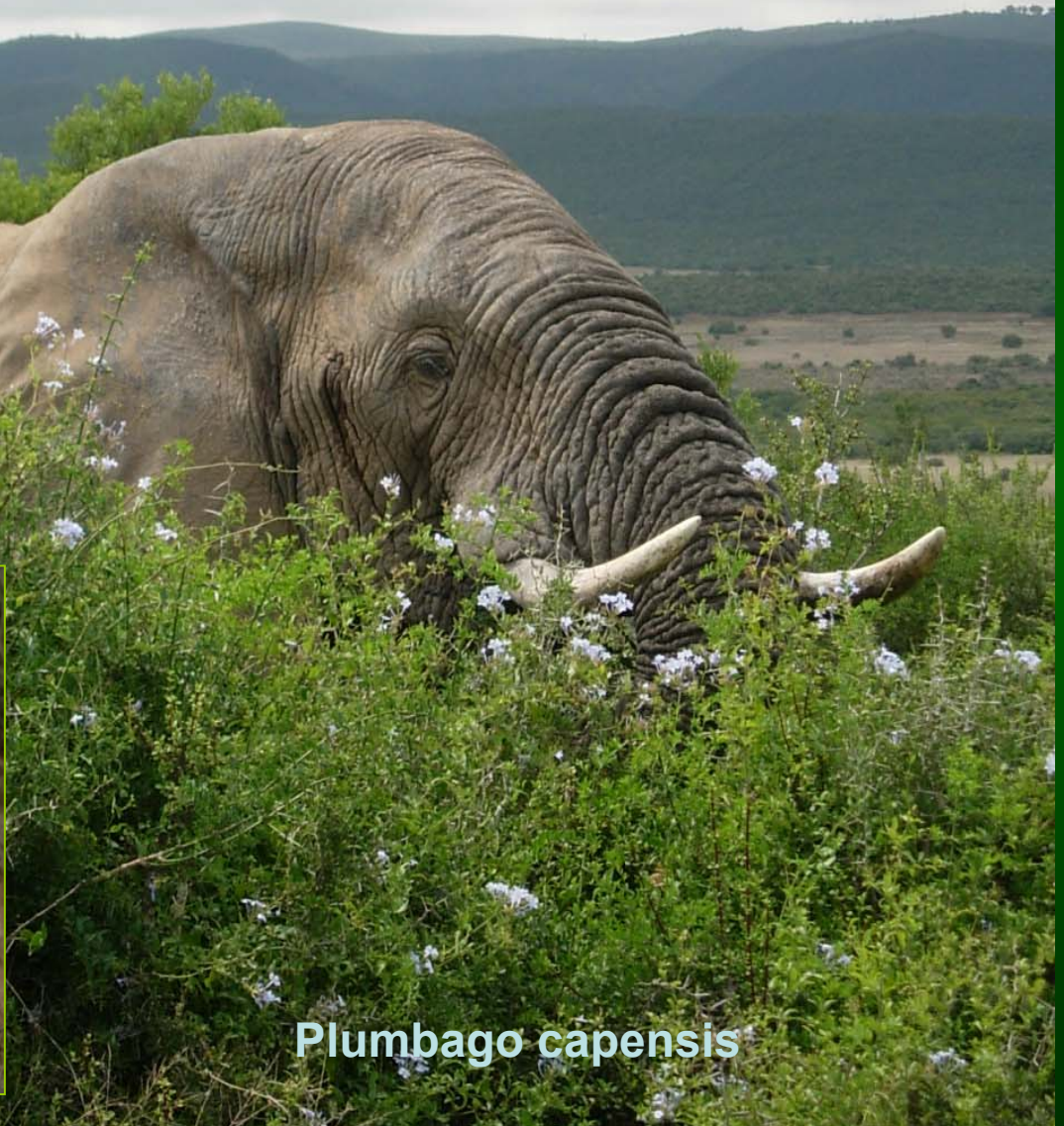
Cadaba aphylla

Addo Elephant Park near Port Elizabeth

Cyrtanthus clavatus was flowering profusely in January



Cyrtanthus clavatus



Plumbago capensis

Kuzuko Private Game Reserve, Somerset East



Encephalartos lehmannii



Aptosimum procumbens (Karoo violet) Our hosts, Alan & Judy Faldon

First stop – Kuzuko Private Game Reserve



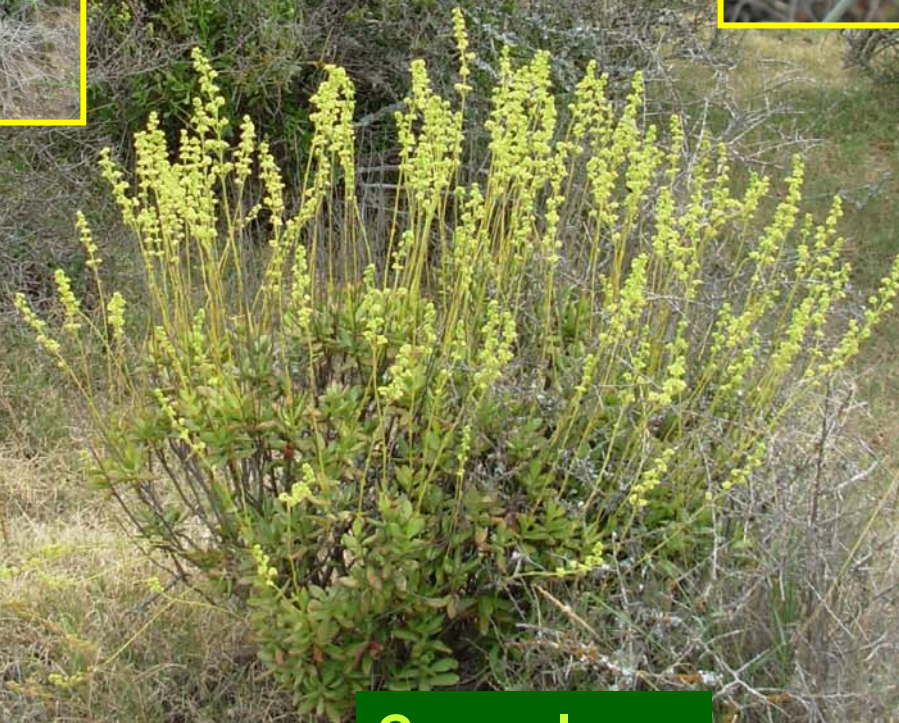
Euphorbia sp.



Eriospermum sp.



Adromischus sp.



Crassula sp.

Kaboega Private Game Reserve –

Valley Thicket

Fynbos





Encephalartos longifolius

Glen Avon Valley and Waainek Wild Flower Reserve, Somerset East



Waainek Wild Flower Reserve



Helichrysum foetidum



Diascia capsularis



Eucomis autumnalis



Vernonia capensis

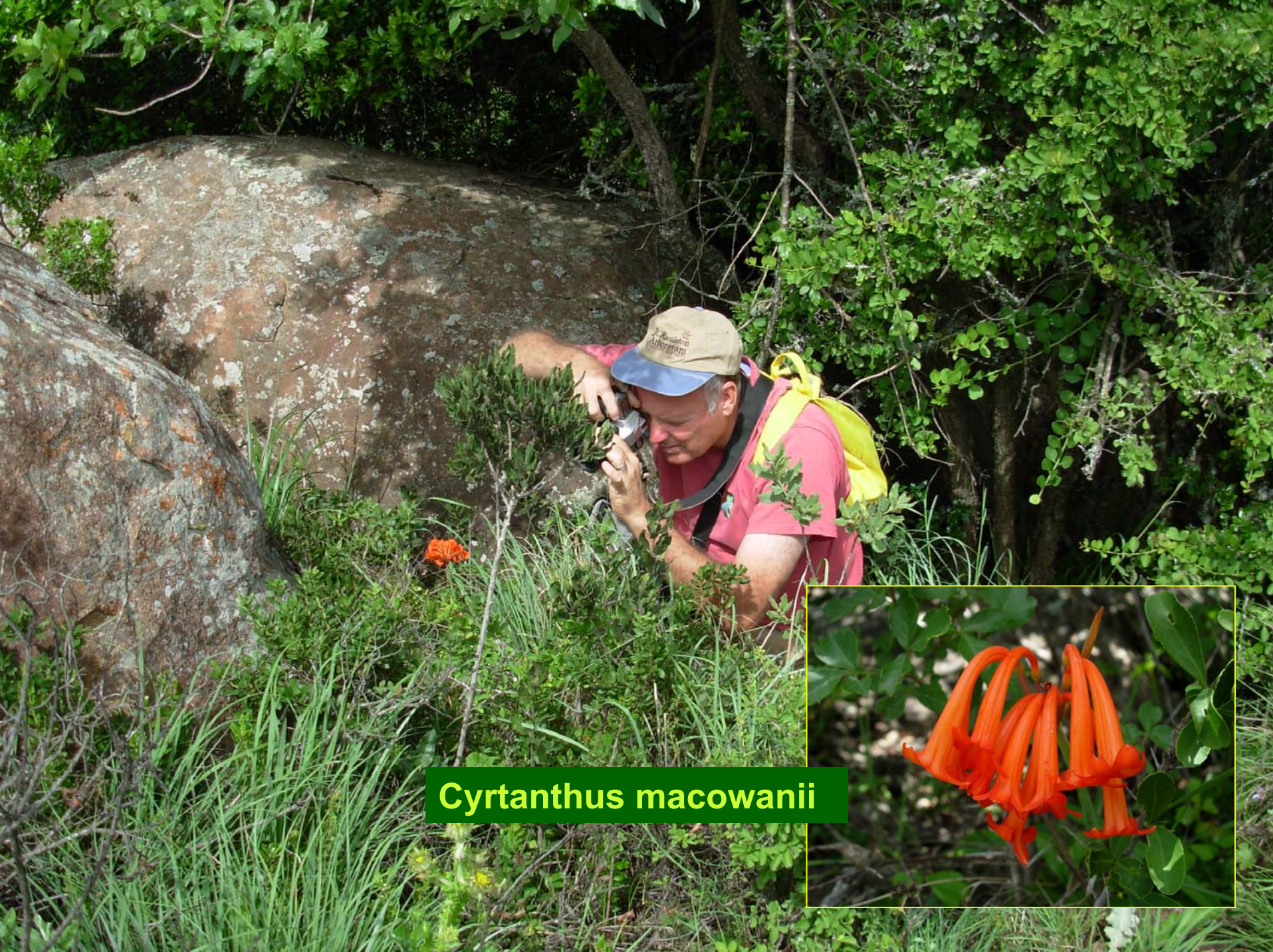


The Waainek Reserve is home to three endemics



**Haemanthus carneus (left) and
Dierama grandiflorum**





Cyrtanthus macowanii



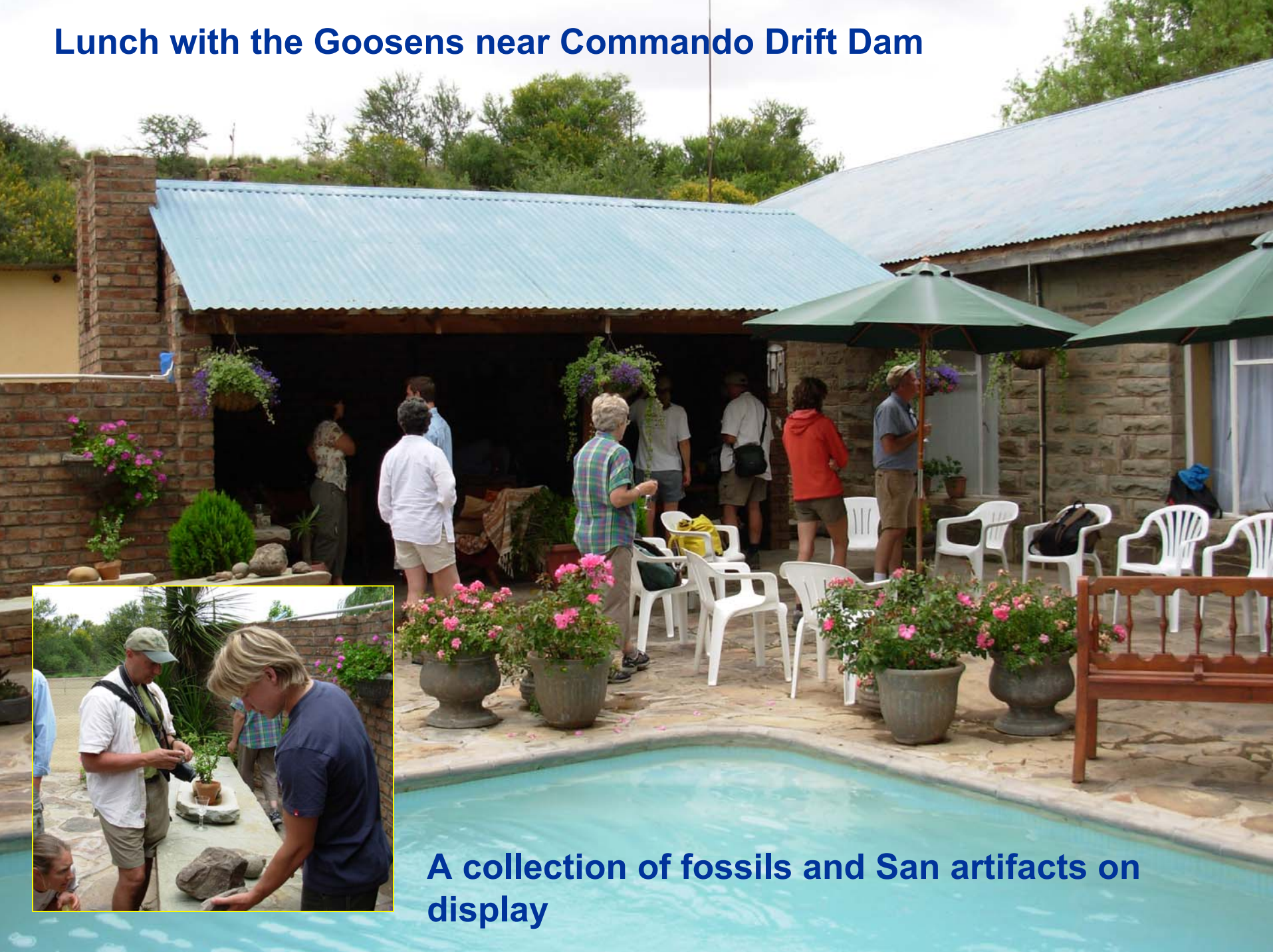


Scadoxus puniceus



Glen Avon Falls

Lunch with the Goosens near Commando Drift Dam



A collection of fossils and San artifacts on display

Commando Drift Dam



Albuca shawii



Stapelia gigantea



Nerine laticoma ssp. huttoniae



Aloe broomii near Tarkastad

Sharp eyes spot many roadside treasures like this *Brunsvigia* near Dordrecht



Brunsvigia radulosa



Woodcliffe and Maclear

Protea subvestita

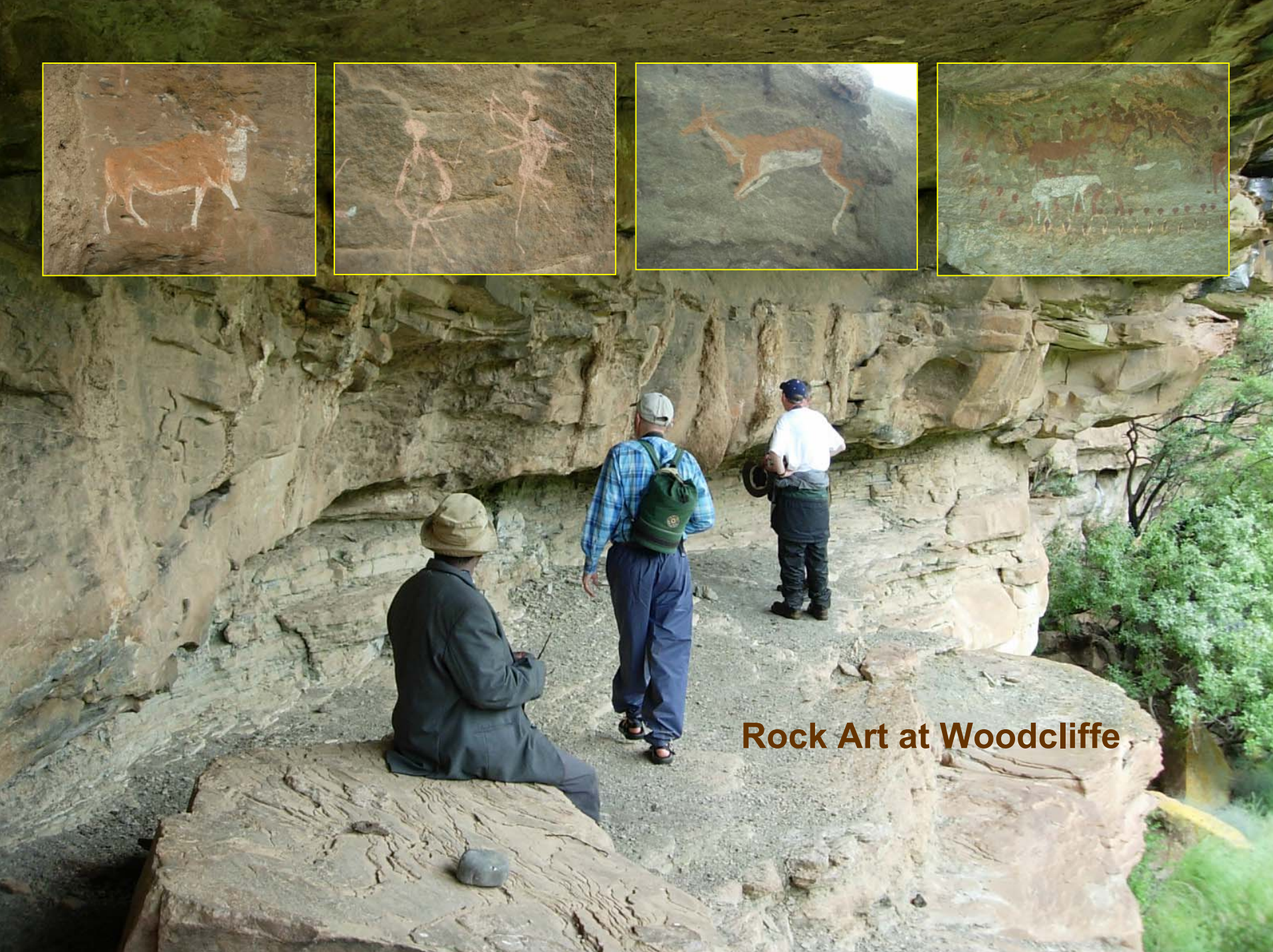


Protea caffra



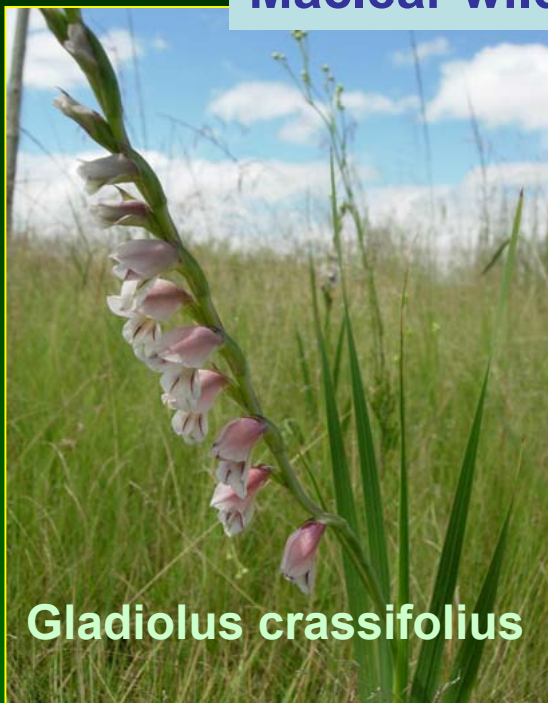


Tritonia disticha



Rock Art at Woodcliffe

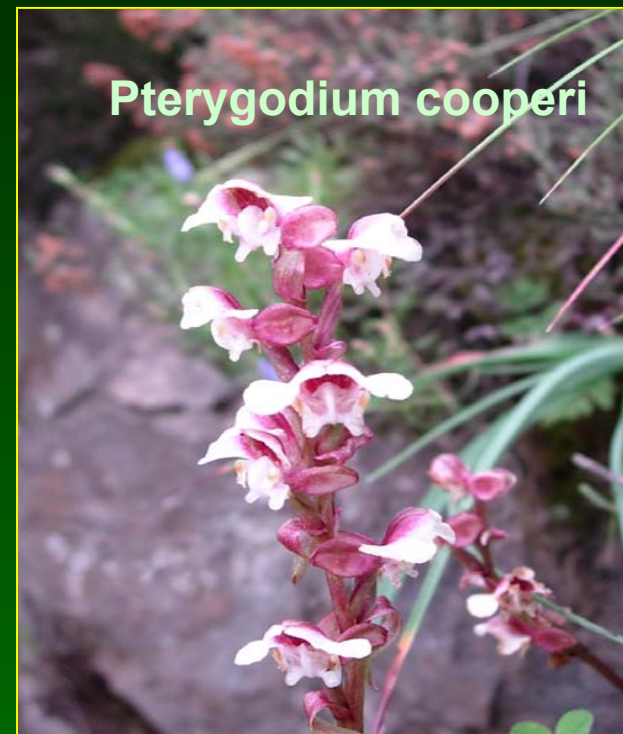
Maclear wild flowers



Gladiolus crassifolius



Pterygodium magnum



Pterygodium cooperi



Nerine appendiculata



Satyrium neglectum



Satyrium hallackii

Wild flowers in the Maclear district



Watsonia confusa



Eulophia welwitschii



Brunsvigia grandiflora



Disa versicolor



Agapanthus campanulatus

On the Potberg Pass between Maclear and the famous Naude's Neck which scales the high southern Drakensberg mountains in the background. Ominous weather this day caused us to alter our programme



Balloch – a guest farm in a private valley high in the southern Drakensberg

A two night stay here includes hikes and 4 x 4 excursions as well as great meals around the family dining table



Balloch



Gladiolus saundersii



Balloch



Dierama robustum



Balloch



Balloch -

photography is serious business



Disa porrecta

Balloch San rock art



Tiffendell Ski Resort - 2800m altitude



Senecio macrospermus

Tiffendell Ski Resort - 2800m altitude



Kniphofia caulescens

Tiffendell – Alpine flora



Gladiolus longicollis

Berkheya setifera



Kniphofia ritualis



Hirpicium armerioides



Glumicalyx nutans

Tiffendell Ski Resort - 2800m altitude



Romulea macowanii



Wurmbea elatior



Alpine Flora



Tiffendell



The elusive *Eucomis schijffii*





Hazards of mountain storms - We got caught when descending from Tiffendell to Rhodes and were held up for a few hours



Was I relieved to eventually be pulled through!

Naude's Neck – 2500m altitude

A botanical paradise

Dierama pauciflorum



Disa thodei



Harveya scarlatina

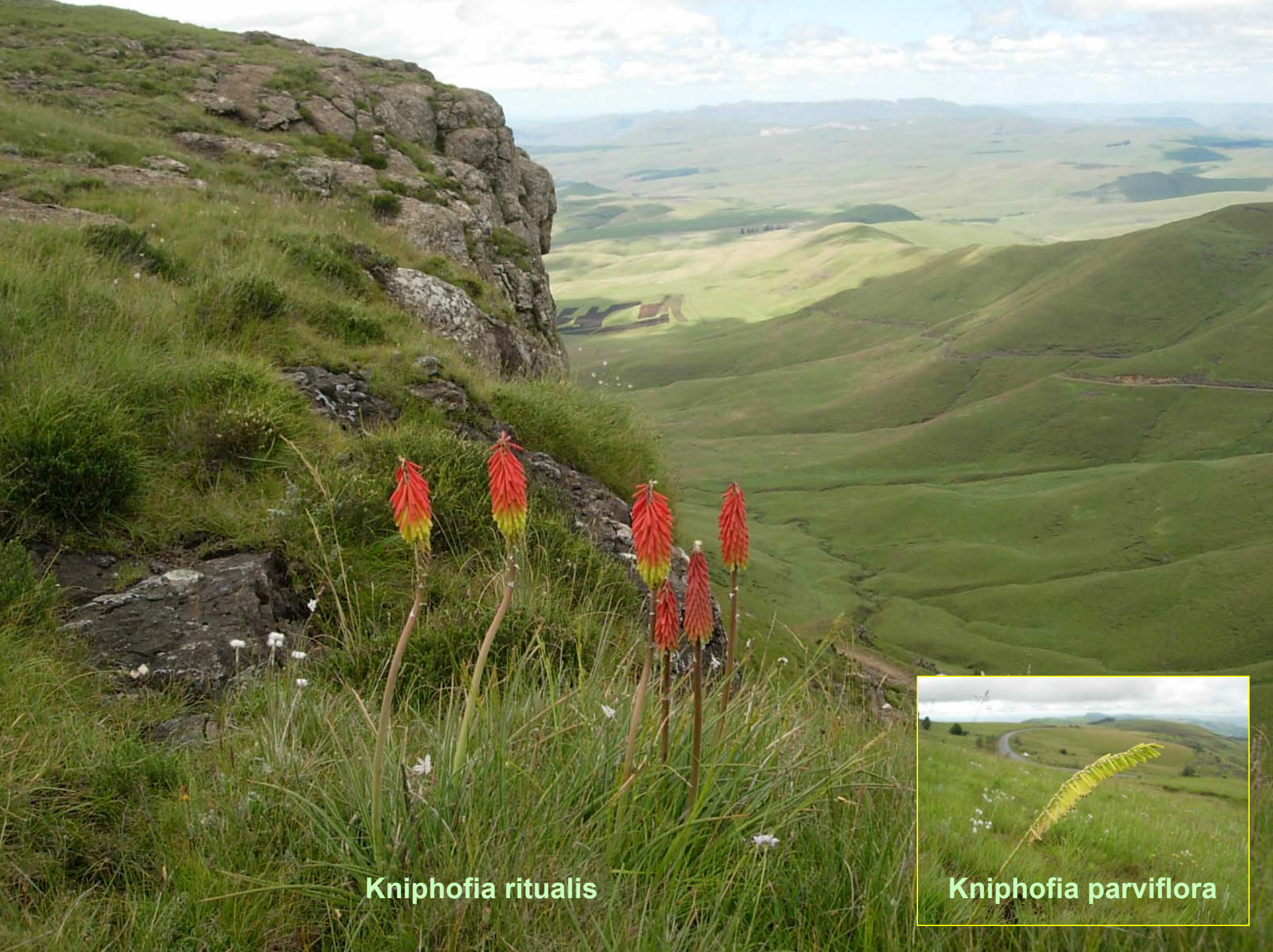


Romulea thodei



Romulea macowani





Kniphofia ritualis



Kniphofia parviflora

Descending Naude's Neck Pass



**Gladiolus
oppositiflorus**



Huttonaea grandiflora



Disa fragrans



Gladiolus saundersii

The vary rare *Crocosmia masoniorum*
Is confined to damp cliffs at Satan's Neck
near Engobo, Transkei



Moonstone Magic Cycad Trail



Dierama atrum



Diascia rigescens



Argyrolobium harveyanum



Moonstone Magic Cycad Trail



Cyrtanthus macowanii

Carl with the endemic *Encephalartos princeps*



Moonstone Magic Cycad Trail



Boophone disticha

**Our hosts were Neil Potter and family
Next to *Encephalartos frederici-guilielmi***



Encephalartos princeps

Cyrtanthus obliquus

Moonstone Magic Cycad Trail



Encephalartos caffer

Cyrtanthus macmasteri

Moonstone Magic Cycad Trail



Catocroptera cloantha



Euphorbia bupleurifolia



Cycnium adonense

Moonstone Magic Cycad Trail

After a long hike – a very welcome picnic lunch provided by our hosts



Eulophia zehyeriana



Streptocarpus primulifolia



Pachycarpus dealbatus

Pelargonium reniforme





Moquiniella rubra



Euphorbia gatbergensis



Euphorbia triangularis

Thomas River

Encephalartos frederici-guilielmi



Gladiolus mortonius
Kniphofia uvaria



Nerine filamentosa



Cathcart

Brunsvigia gregaria



Androcymbium striatum



Orbea verrucosa



Brachystelma cathcartense



Upper Cathcart

Dierama pulcherrimum



Kniphofia northiae



Brunsvigia grandiflora



Aeropetes tulbaghia

Kniphofia triangularis

Amatola Mountains



Agapanthus campanulatus

Dierama atrum



Gladiolus dalenii



Schizochilus zeyheri



Melasma scabrum



Fanninia caloglossa

Amatola Forests



Liparis bowkeri



Impatiens hochstetteri

Home of the rare
and endangered
Cape Parrot



Kei Mouth

Gladiolus gueinzii



Gloriosa superba

Kei Mouth



Draceana aletriformis



Dietes grandiflora



Gladiolus ochroleucus



Disa polyganoides



Olivia nobilis



Gladiolus oppositiflorus

Crocosmia aurea



Clivia nobilis



Crinum moorei



**Lalapanzi Forest hike near
Kei Mouth is a
fantastic experience**

Lalapanzi



Streptocarpus primulifolius

Encephalartos altensteini



Encephalartos villosus

**Keiskamma River Pass – a dry hot river valley that revealed
some treasures**



Cyrtanthus sanguineus and Mystacidium capense

Kap River Nature Reserve near the mouth of the Great Fish River



Moraea stricta is fairly common here

Kap River Reserve

Phoenix reclinata and *Aloe pluridens* and *Encephalartos altensteinii*

We went on a late afternoon hike to see the
Clivias



Kap River Reserve



Clivia nobilis



Near Grahamstown

Aloe lineata



Ecça Pass Reserve – Succulent Thicket vegetation



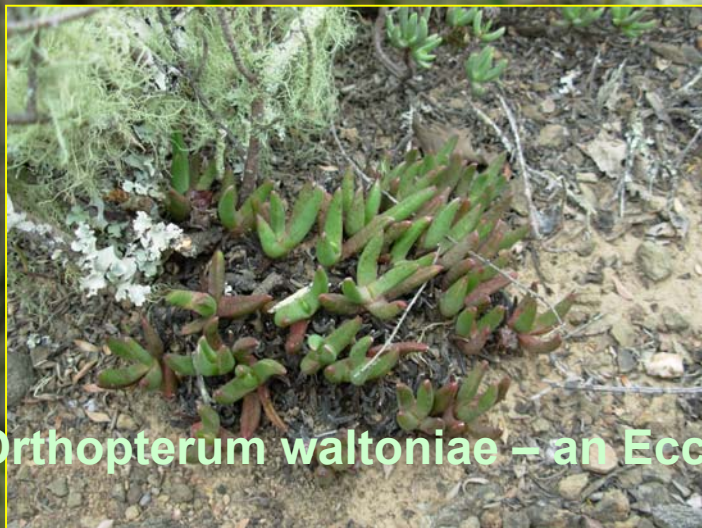
Euphorbia bothae

Euphorbia fimbriata

Ecca Pass Reserve



Ceropegia ampliata



Orthopterum waltoniae – an Ecca Pass endemic



Pachypodium bispinosum



Crassula perfoliata

This inset image shows a cluster of bright red, rounded flower heads of *Crassula perfoliata* growing from green, succulent leaves. The plant is situated in a natural, rocky environment with other low-lying vegetation in the background.

Ecca Pass Reserve



Bergeranthus scapiger

This inset image shows a small, green, succulent plant with thick, fleshy leaves and a short, upright stem. It is growing in a rocky, sandy soil environment.



Barleria obtusa

This inset image shows a small, purple, star-shaped flower with five petals, growing from a green, succulent plant. The plant is situated in a natural, rocky environment with other low-lying vegetation in the background.

**Haworthia reinwardtii,
Euphorbia stellata, Aloe tenuior**



Sadly we now have to bid farewell to the Eastern Cape, but hopefully you have been stimulated to pay us a visit

